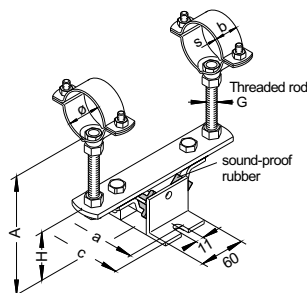


Type 116 L-GW



SOUND INSULATED
according to
DIN 4109

Type 116 LA-GW
with sound insulation

All dimensions in mm

Pipe ø	b x s	Standard A	G	116 LA-GW					116 L-GW				
				a	c	H	Item number		a	c	H	Item number	
							Design hot-dip galv.	Design galvanized				Design hot-dip galv.	Design galvanized
21.3 26.9 28.0	20x1,5	155	M8	78	100	63	23003492 23003493 23011140	23020086 23020087 23025492	68	90	64	23023266 23023267 23025481	23024390 23024391 23025482
33.7 42.4 48.3 57.0 60.3 76.1	30x2,5	155	M12	78	100	64	23003494 23003495 23003496 23003497 23003498 23003499	23020088 23020089 23020090 23020091 23020092 23020093	68	90	65	23023268 23023269 23017755 23025483 23020532 23014853	23024392 23024393 23024394 23025484 23024395 23024396
88.9 108.0 114.3 133.0 139.7 159.0 168.3	40x4,0	155	M16	78	100	64	23003500 23003501 23003502 23003503 23003504 23003505 23003507	23020094 23025493 23020095 23020096 23020097 23020098 23020099	68	90	65	23020529 23025485 23015433 23025487 23018797 23025489 23020530	23024397 23025486 23024398 23025488 23024399 23025490 23024400
Other diameters on request. Please tell us the requested pipe diameter.													

Technical data

Sound proofing performance: 19 dB (A)
max. load for
pressure, tensile or pipe shear force: k. A.

Description

The fixed point pipe clamp Type 116 form LA-GW is a structure-borne insulating pipe fastener to receive of pipe loads in every mounting situation. It was constructed to absorb pipe shear force caused by heating or exposure to cold. The mounted insulation unit is placed under initial load at the base of the fastening -therefor outside the pipe isolation. Aging and curing through high tempered pipes resulting in a reduction of the sound insulation are impossible. The structure distance is elevated made by threaded rods and pipes with extrem dimensional stability. Distance changing is simple. A special feature of this design is the versatile application possibilities of the insulation unit e.g. in special structures or as highly resilient pipe clamp for long pipes with large diameters.

Specification

Zinc-coated