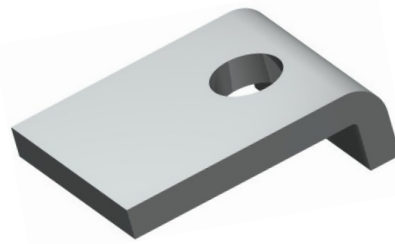
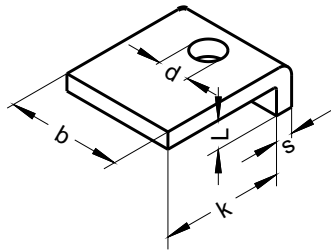
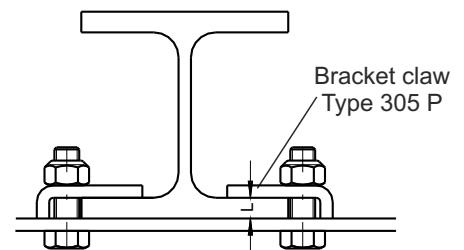


**BRACKET CLAW**Type **305 P**

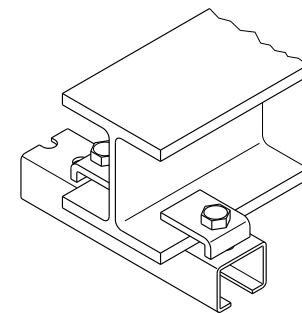
DBGM G9000064.1

dipa

**Usage example**

All dimensions in mm

Size	adapted to flange thickness of the beams		Hole ød	k	Item number galvanized
	L	Material bxs			
1	10	40x6	11	43	28004704
		40x6	13	45	28005323
		50x8	17	45	28021912
2	15	40x6	11	43	28004705
		40x6	13	45	28005324
		50x8	17	45	28023069
3	20	70x10	23	70	28005316
		40x6	11	43	28004706
		40x6	13	45	28005325
4	25	50x8	17	45	28023070
		70x10	23	70	28005317
		40x6	11	43	28004707
5	30	40x6	13	45	28005326
		50x8	17	45	28023071
		70x10	23	70	28005318
6	35	40x6	11	43	28004708
		40x6	13	45	28005327
		50x8	17	45	28023072
7	40	70x10	23	70	28005319
		40x6	11	43	28004709
		40x6	13	45	28005328
		50x8	17	45	28023073
		70x10	23	70	28005320
		40x6	11	43	28004710
		40x6	13	45	28005329
		50x8	17	45	28023074
		70x10	23	70	28005321



Loading capacity of the mounting instruction			
Screw quality 4.6		Screw quality 5,6	
M10	7,0 KN	M10	9,0 KN
M12	10,0 KN	M12	13,0 KN
M16	12,0 KN	M16	14,0 KN

**Description / Mounting instruction**

The dipa® bracket claw Type 305 P is a mounting unit with high load-bearing capability for the attachment of installation components, profiles etc. to sectional steel brackets without drilling or welding.

The borehole, which lies close to the edge, provides a solid support for the mounting screw. The bracket claw is mounted in such a way, that the mounting screw touches the beam flange. Therefore, the screw can be brought to its max. permissible breakaway torque without deforming the bracket claw.

**Specification**

Material No. 1.0038, zinc-coated or stainless steel material No. 1.4301 or 1.4571

**Also STAINLESS available  
RUST  
PROOF**



**Ordering designations: Type... Size... Material bxs... Hole ø... Surface... Item number**  
e.g. 305 P Size 1 40x6 d=13 galvanized 28005323